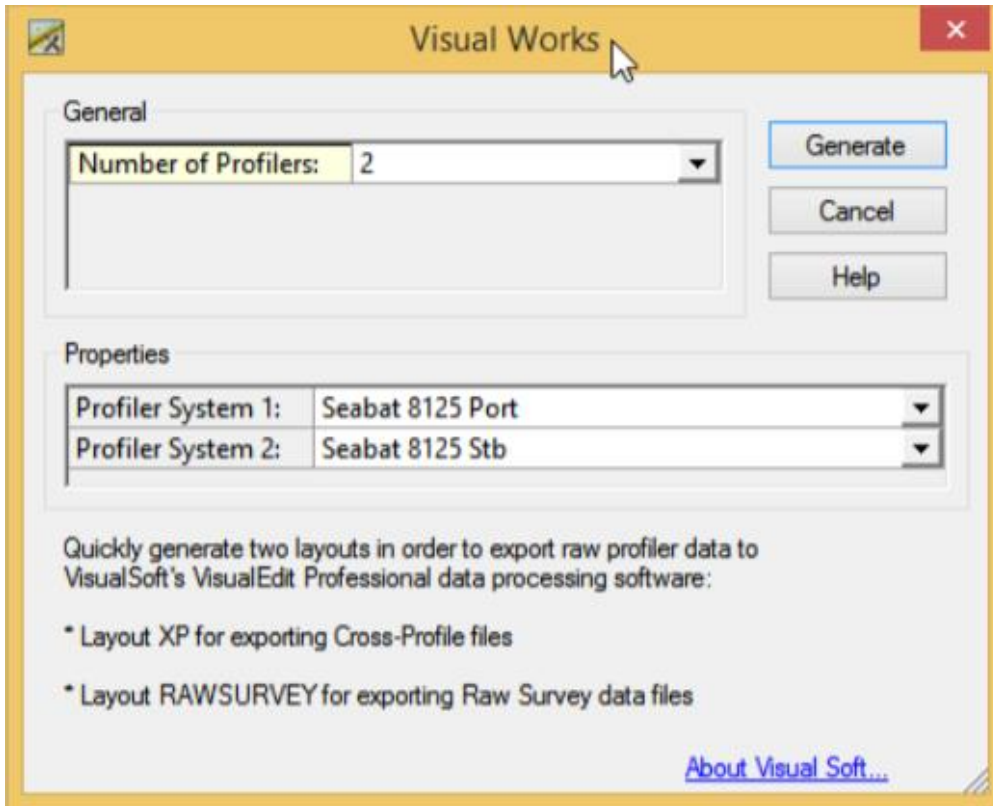


New Export Formats

Quick setup for VisualSoft Export

In the Generic layout editor the option is added to quickly generate a new layout in order to export raw profiler data to VisualSoft's file format. Select from the File pull-down menu option Generate Layout, Export, Visual Works...A dialog will appear where the user only has to select which profiler (or multibeam) system to use. Finally, pressing the generate button will automatically create two layouts, one called XP and one called RAWSURVEY.

These two layouts can be used in the Export Generic Wizard in order to export your raw profiler data to files which can be imported into VisualSoft's VisualEdit Professional Processing software.



LAZ/LAS Data Format Export

In this version of QINSy it is possible with the Processing Manager to export QPD data to the LAS/LAZ format. The LAS format is a public binary format typically used to exchange 3D point cloud data. The format originated in the LIDAR community, and LAZ is a compressed version of the LAS format. The export module supports version 1.2, 1.3 & 1.4.

