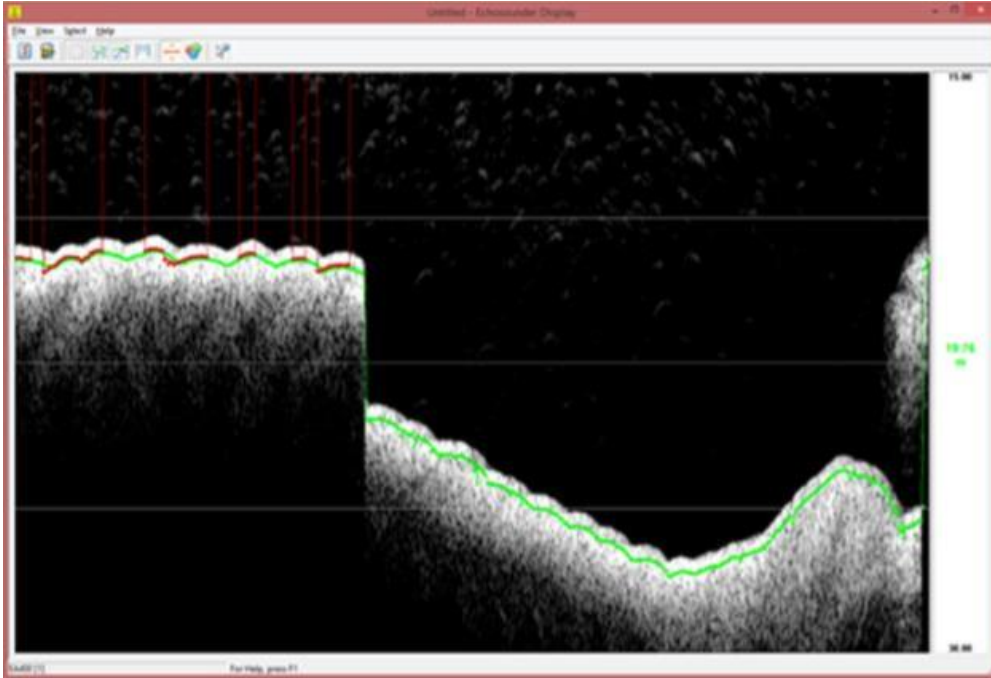


Water Column Functionality for Single Beam Echosounders

WCD in SBES Display & WCD Editor

In this version, Water Column Data (raw echogram) support for Single Beam Echo Sounders (WCD SBES) was added to both the online Single Beam Echo Sounder display and the offline Water Column Data Editor. This makes it possible to add the WCD as a background in the Single Beam Echo Sounder display and to monitor the quality of the bottom detection while recording the data. It also makes it possible to monitor any other reflectors present in the water column such as gas seeps, wire or seaweed. See example:



Offline, using the WCD Editor utility (Processing Manager) allows the user to quickly check and even to alter digitized depth (with the changes being written directly to the QPD file), see example:

